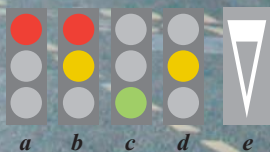


Bus Drivers & Cyclists *IN HARMONY*

The streets of Oxford are very busy. Each and every road user has a duty of care to all other road users. Some cyclists feel threatened by buses though actual conflict is very rare. Bus drivers and cyclists should all work together to keep our roads SAFE. This leaflet intends to make bus drivers and cyclists more aware of each others needs, and show how we can help each other to make our journeys safer and encourage travel by cycle and bus.

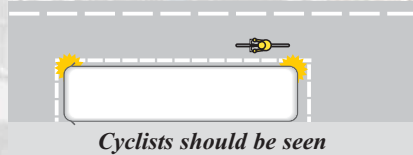
*To start with, a simple quiz:
What do the following
traffic signs mean?*



Answers printed on back page

CYCLISTS SHOULD KNOW THAT BUS DRIVERS:

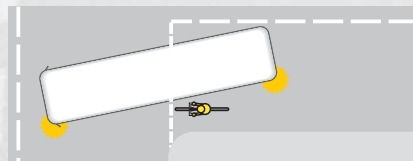
- Have difficulty operating in overcrowded narrow streets
- Often find it difficult to see cyclists
- Have a number of blind spots in their mirrors and may not spot a cyclist, especially one who is riding right alongside their bus
- Can't see a cyclist unless the cyclist can see their mirror. Cyclists should be able to see the drivers face reflected in his mirror



- May not realise that a cyclist sometimes needs to move out quickly due to the road surface or drain covers
- Feel uneasy when cyclists wobble, ride hesitantly or move out suddenly
- Drive long and very wide vehicles and take up a lot of room
- Find it difficult when turning left, right or manoeuvring around roundabouts, as they may need to move out before turning to give them more room. If the vehicle is a long one, the rear of the bus may come very close to the kerb while turning

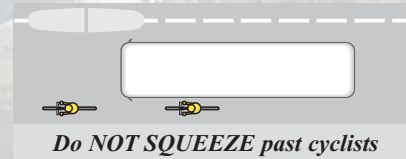
Cyclists be aware that the rear end of the bus will come very close to the corner when the vehicle is turning.

Stay back. Do not be tempted to pass the bus at this point.



BUS DRIVERS SHOULD KNOW THAT CYCLISTS:

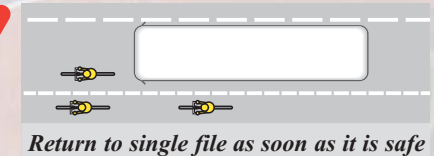
- Are very vulnerable. They are not surrounded by the bodywork of a bus
- Can be injured quite seriously, even in what may look like a minor accident
- Can be difficult to see, especially if alongside a bus or not wearing bright clothing
- May not realise they could be in a bus driver's blind spot
- Often feel threatened when a bus travels too close to them, especially at speed



- Are easily affected by side winds when being overtaken by large vehicles at speed
- Ride away from the kerb's edge to:
 - Avoid drains and debris
 - Be seen more easily
 - Discourage bus drivers from squeezing past where the road is narrow, especially when moving off from stationary
- May wobble due to external conditions. Road surfaces (potholes), rain, wind and poor visibility make it harder to steer in a straight line
- Are particularly vulnerable at junctions, especially when the vehicle is turning. This is also true for roundabouts
- Are permitted to use bus lanes where traffic signs so indicate

HOW CYCLISTS CAN HELP TO AVOID DIFFICULTIES FOR BUS DRIVERS

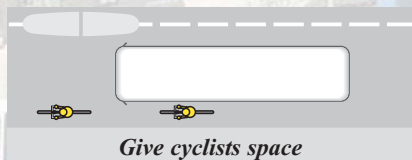
- Follow the rules of the road. Always obey traffic lights, road signs and act on signals (indicators) by the bus driver
- Take great care when riding along the nearside of buses, especially at junctions
- Always travel in single file when on busy city streets and narrow country lanes, except when carrying out an overtaking manoeuvre



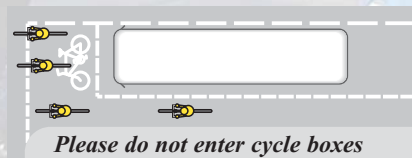
- Use your cycle lights (back and front), especially during the early evening at dusk
- Wear bright reflective clothing
- Give good clear signals in plenty of time
- Take notice and act upon any signal given by drivers of other vehicles and other road users
- Don't weave between, or in and out of, traffic
- Do not pass buses on the near side if they are stationary at bus stops. Passengers may be leaving or boarding
- Use cycle facilities (cycle lanes and cycle tracks) where practical. They can make your journey safer. Remember, some cycle lanes and cycle tracks are incorporated into bus lanes. **CHECK TRAFFIC SIGNS**
- Keep cycles in roadworthy condition. Before a journey, always check cycle **LIGHTS, BRAKES & TYRES**, and also check that all nuts and bolts are tight and secure

HOW BUS DRIVERS CAN HELP MAKE CYCLISTS' JOURNEYS SAFER

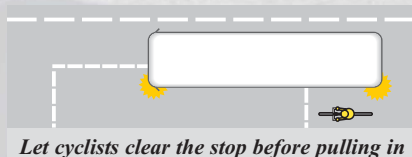
- **THINK BIKE.** Be aware that there are a lot of cyclists in Oxford. Expect to see cyclists and give them plenty of room
- Always check your **MIRRORS** and your **BLIND SPOT BEFORE MOVING OFF**, especially at junctions and roundabouts
- Check nearside mirror before turning left, so that the bus does not trap cyclists as its rear end comes close to the kerb on the turn.
- Signal well in advance
- Do not stop suddenly on a roundabout to let other buses out
- Give cyclists plenty of room when overtaking (they may weave or wobble)
- Do not force your way through when the road is narrow due to traffic islands



- Respect cycle lanes and advance stop lines at traffic lights. Let cyclists use the box so they can be seen.



- When approaching bus stops or junctions, indicate clearly and well in advance
- Do not race past cyclists and pull in quickly to get to a bus stop



Answers to the traffic signs on the front page...

How many did you answer correctly?

- a RED means STOP**
Wait behind the stop line on the carriageway until green shows
- b RED and AMBER also means STOP**
Do not pass the stop line until green shows
- c GREEN means GO IF THE WAY IS CLEAR**
- d AMBER means STOP**
You may only go on if amber appears after you have crossed the stop line or are so close to it that to pull up might cause an accident
- e Warning of "GIVE WAY" just ahead.**
You **MUST** give way, at the line, to traffic on the major road
- f Route for PEDAL CYCLES ONLY.**
- g NO** vehicles over 8 seats (*excluding driver*) or local buses
- h** No vehicles except bicycles pushed by hand
- i** Riding of pedal cycle prohibited
- j** No entry for vehicular traffic
- k** Separated track and path for pedal cycles and pedestrians
- l** With flow Bus and Pedal Cycle lane

It is important that we all know the rules and regulations of the Highway Code. Some cyclists have had little or no training, nor might they understand these rules.

As professional bus drivers you should be aware of this and drive accordingly.

As responsible cyclists you should read, understand and put to use, the rules of the Highway Code.

...a joint local initiative by Norman Davies (Oxford Bus Company), Peter Hunt (Stagecoach Oxford), and the local authorities.



ROAD OPERATORS' SAFETY COUNCIL

Information in this leaflet is for general guidance only. We accept no responsibility for loss or damage from the use of, or reliance on, this material.

Contacts: normanda@oxfordbus.co.uk / peter.hunt@stagecoach-oxford.co.uk



100% recycled paper

Photographs supplied by Malcolm Crowe
© Oxford 2001. Norman J Davies / Peter Hunt.

V112-01 10/01

Designed, typeset and printed by:
Oxfordshire County Council's Printing Unit - Tel: (01865) 815672 - Fax: (01865) 204309